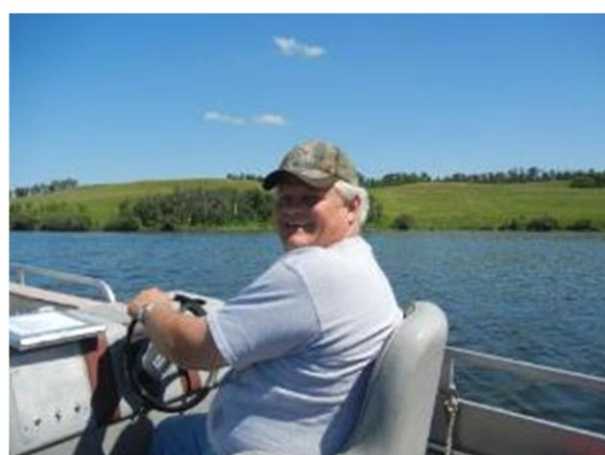
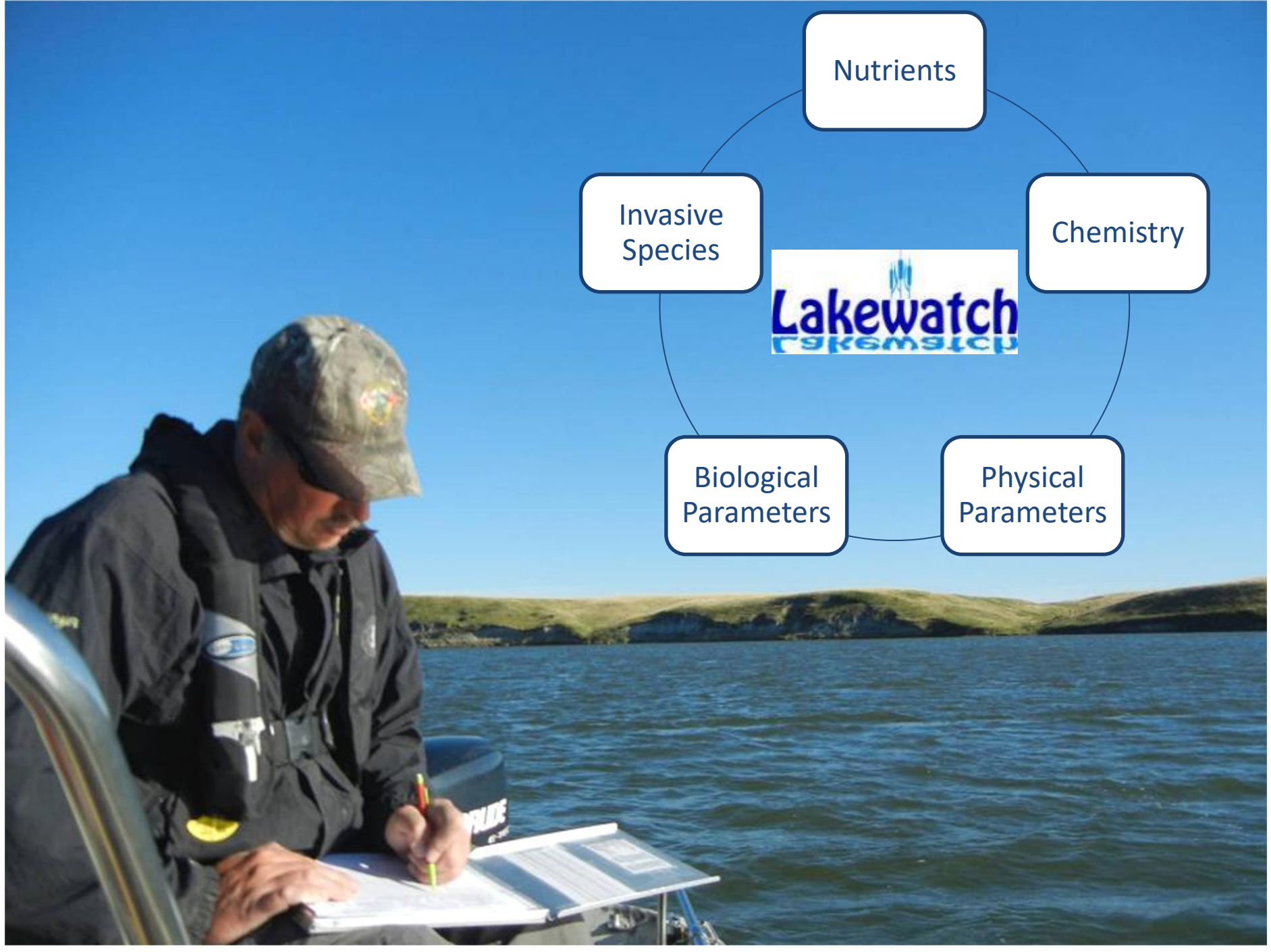


The background of the slide is a wide-angle photograph of a frozen body of water under a vast, blue sky with wispy clouds. The sun is a bright, glowing orb on the horizon, casting long, dark shadows. Two people are walking away from the viewer across the ice. The person in the foreground is pulling a sled loaded with gear. In the distance, a shoreline with several industrial smokestacks is visible. The overall mood is serene and cold.

LILSA Annual General Meeting
August 20, 2022







Nutrients

Chemistry

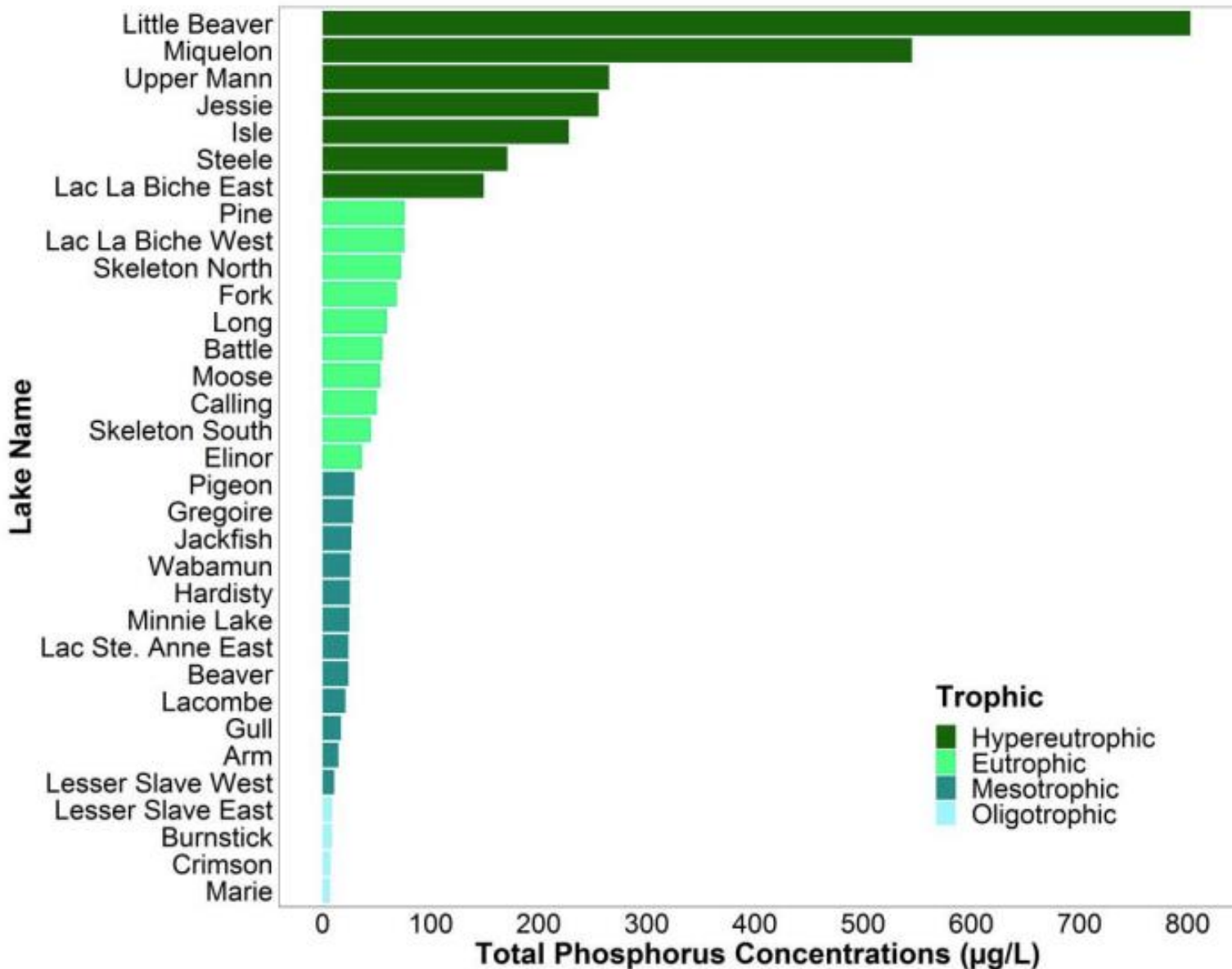
Physical
Parameters

Biological
Parameters

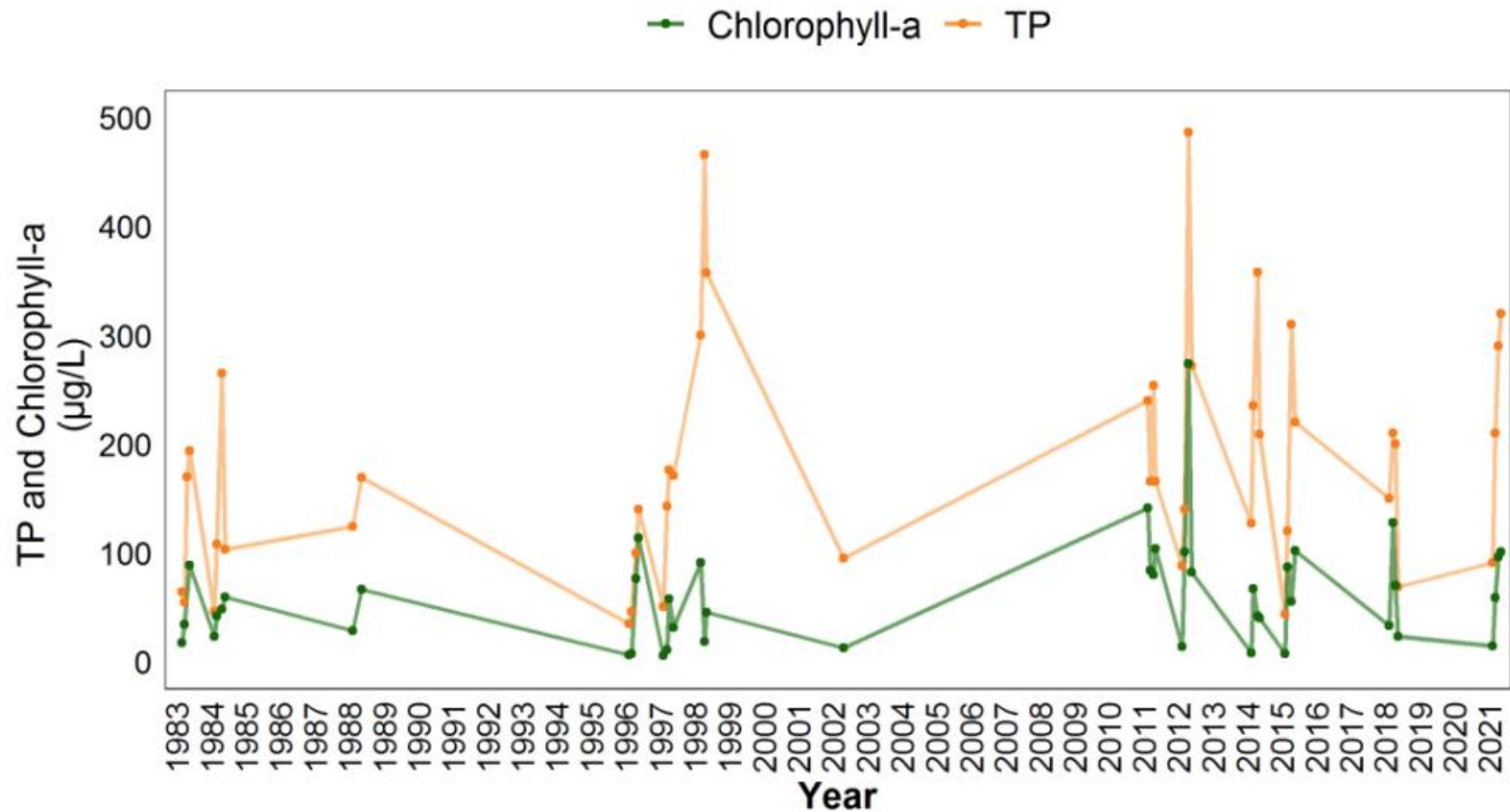
Invasive
Species



2021 Phosphorus at Lakes Across Alberta

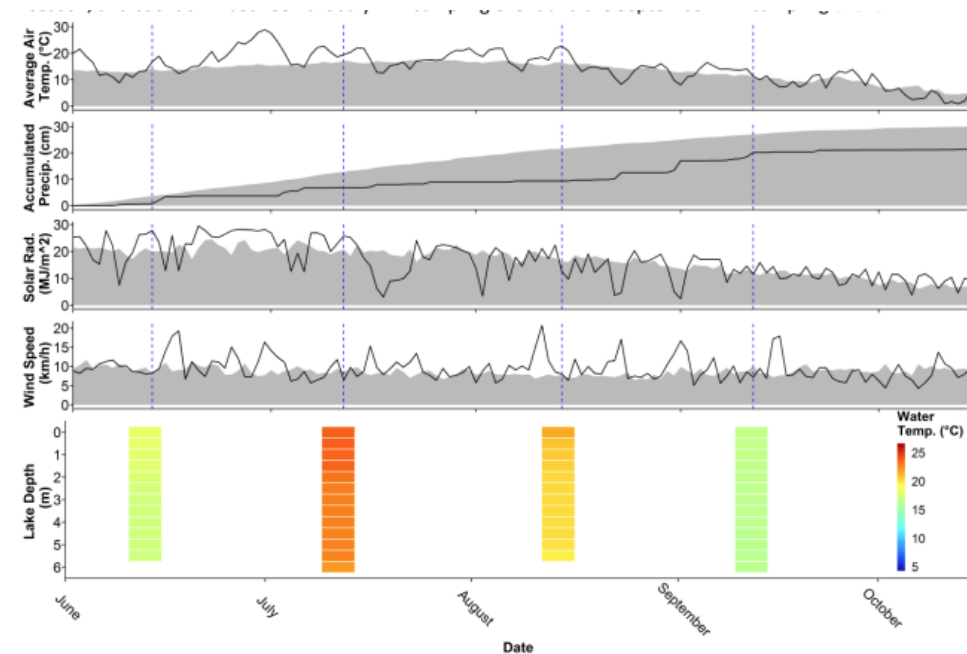
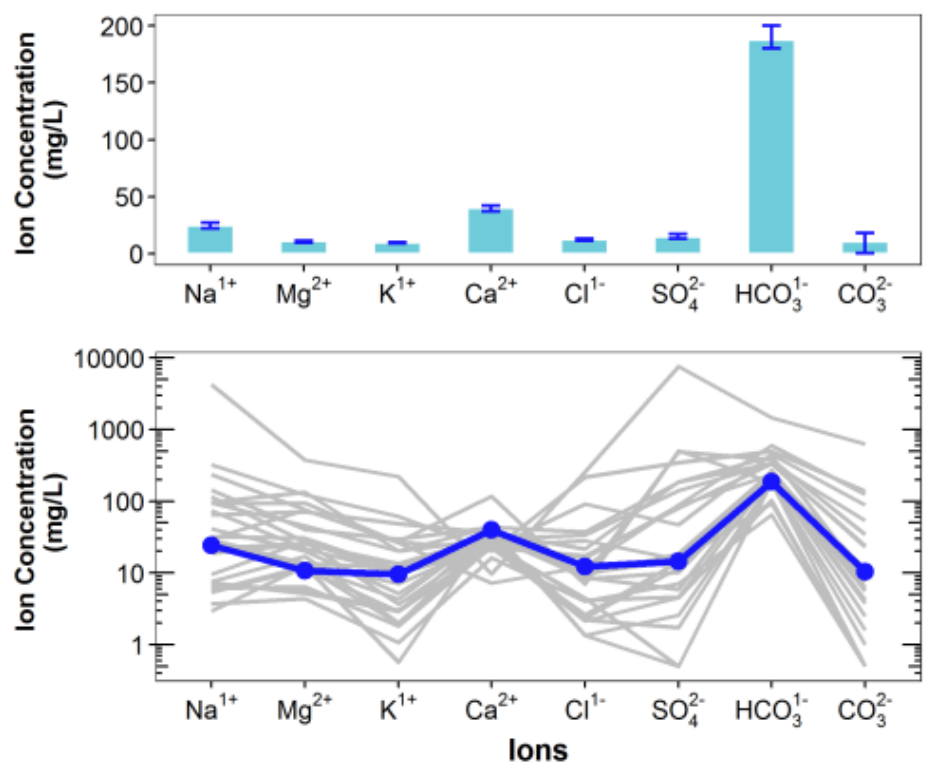


Long Term Trend Analysis at Isle Lake



ALMS Reports: www.alms.ca/reports

Understanding Ion Chemistry

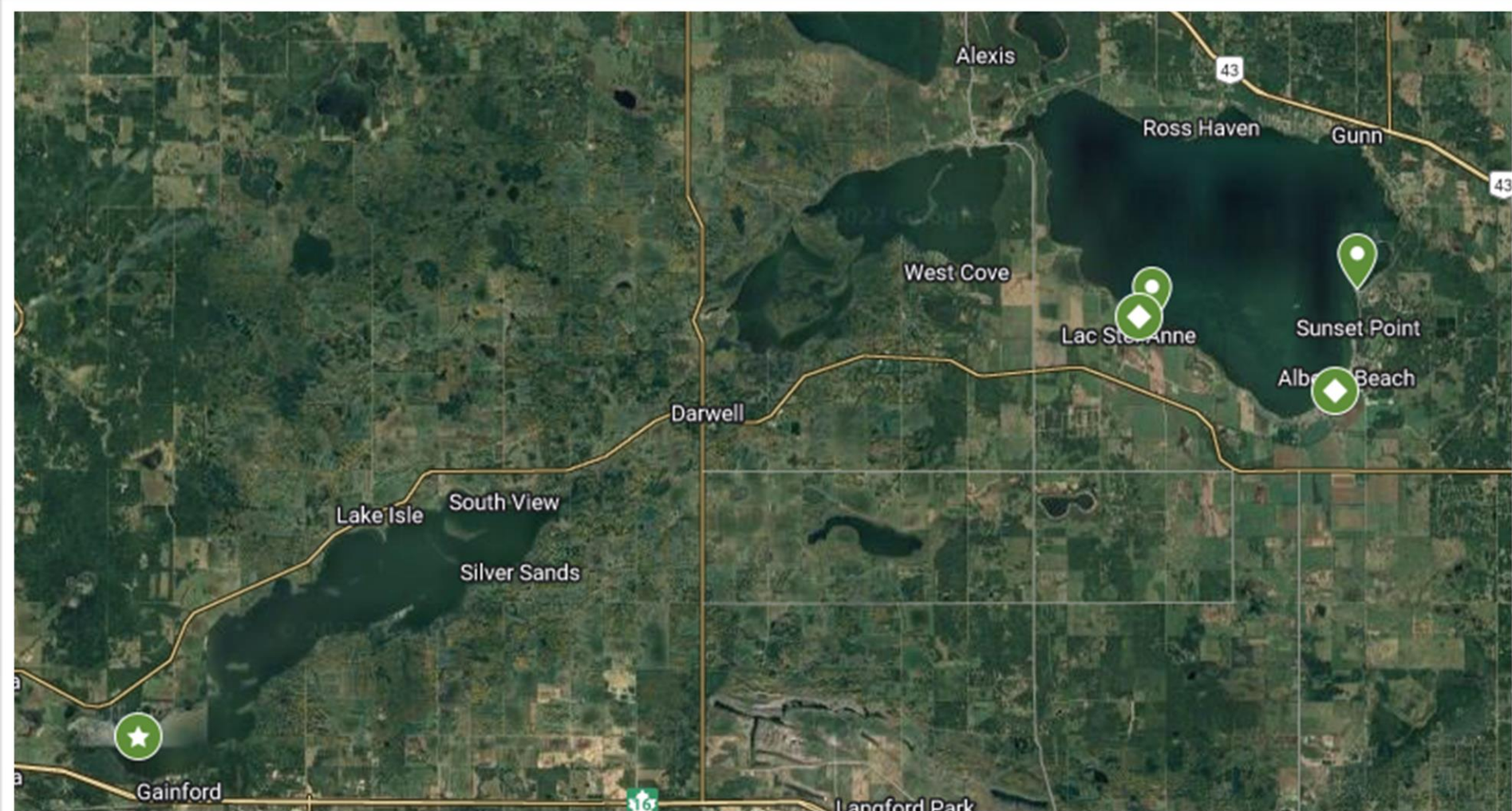


Understanding Annual Weather

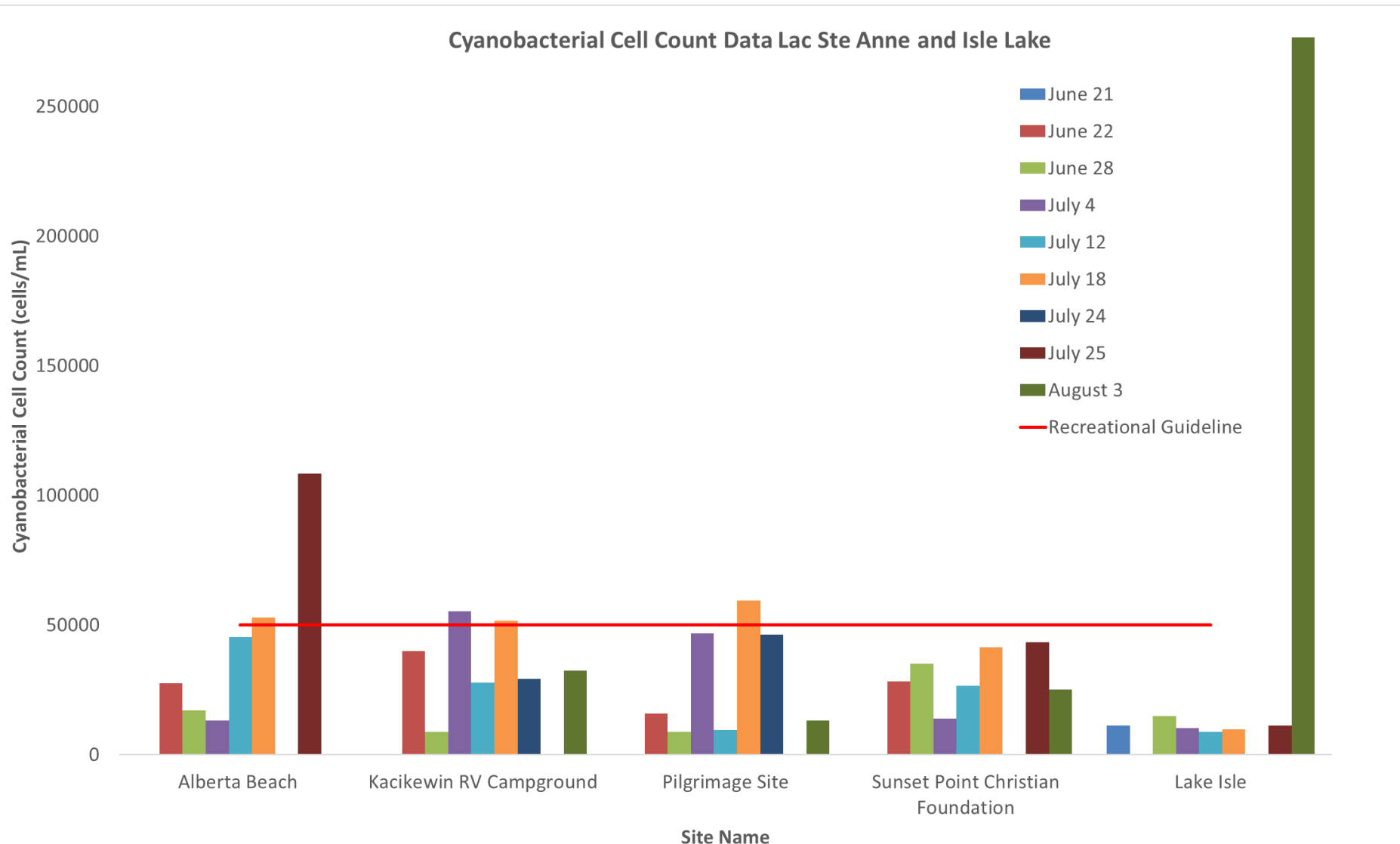
Beach Water Sampling



Beach Sample Locations

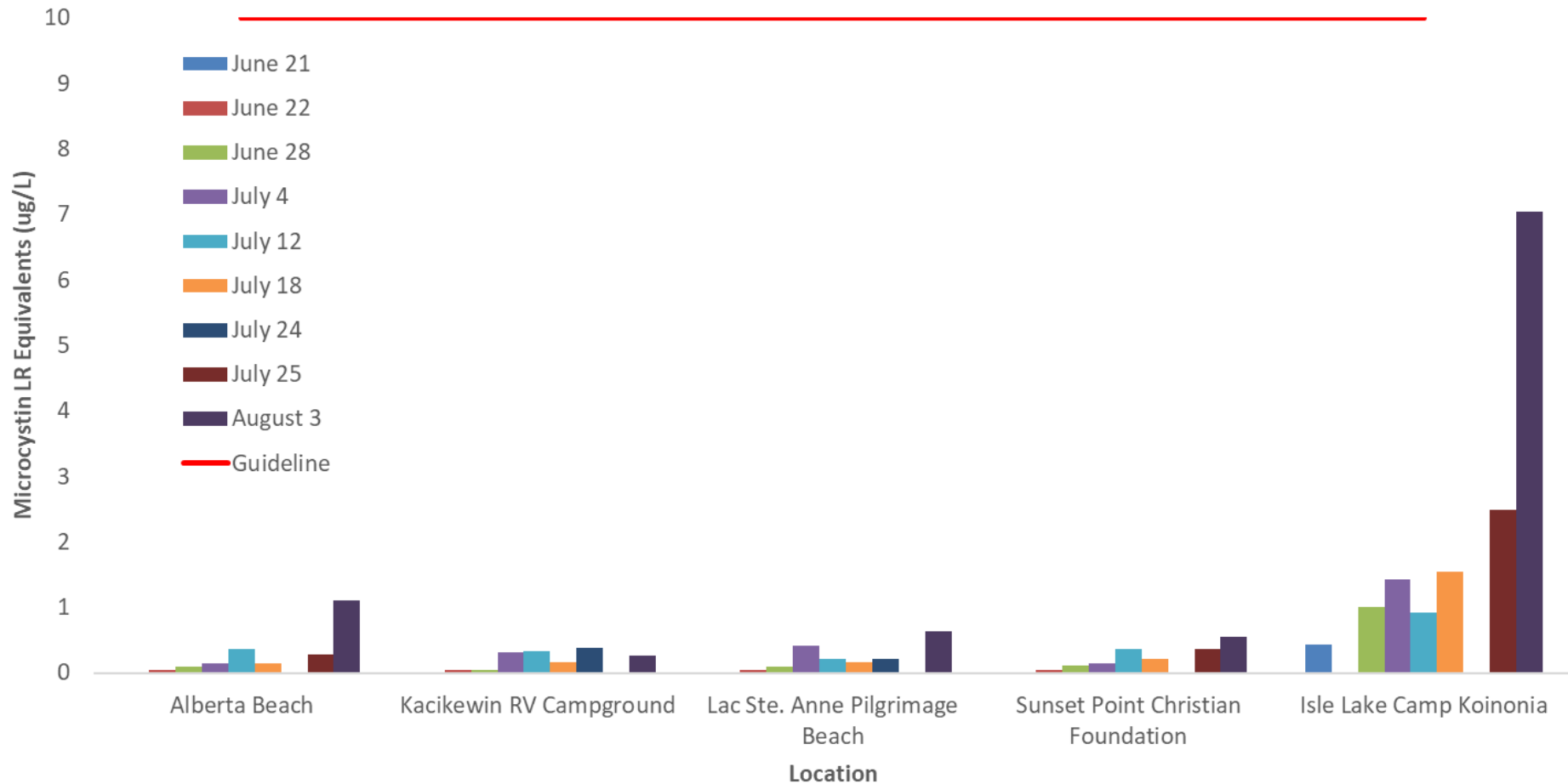


How Many Cyanobacteria (cells/mL) were at Each Beach Location?



How Much Microcystin Toxin (ug/L) was at Each Beach Location?

Microcystin Concentrations at Lac Ste Anne and Isle Lake



What About Grab Samples?



Isle Lake July 18th 2022
Cyanobacteria Cells Per mL: 50,593,557
Microcystin Toxin: 2087.98 ug/L

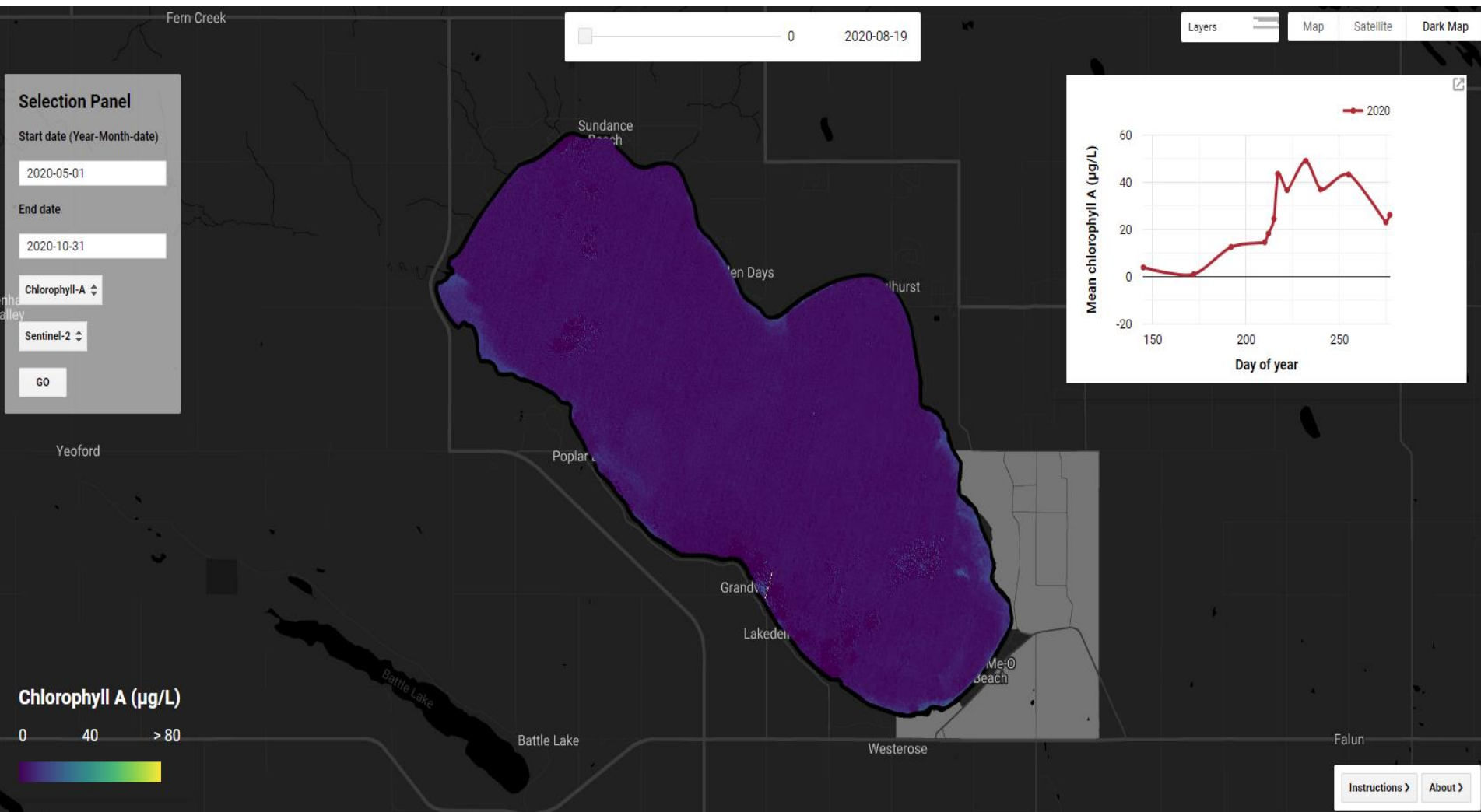


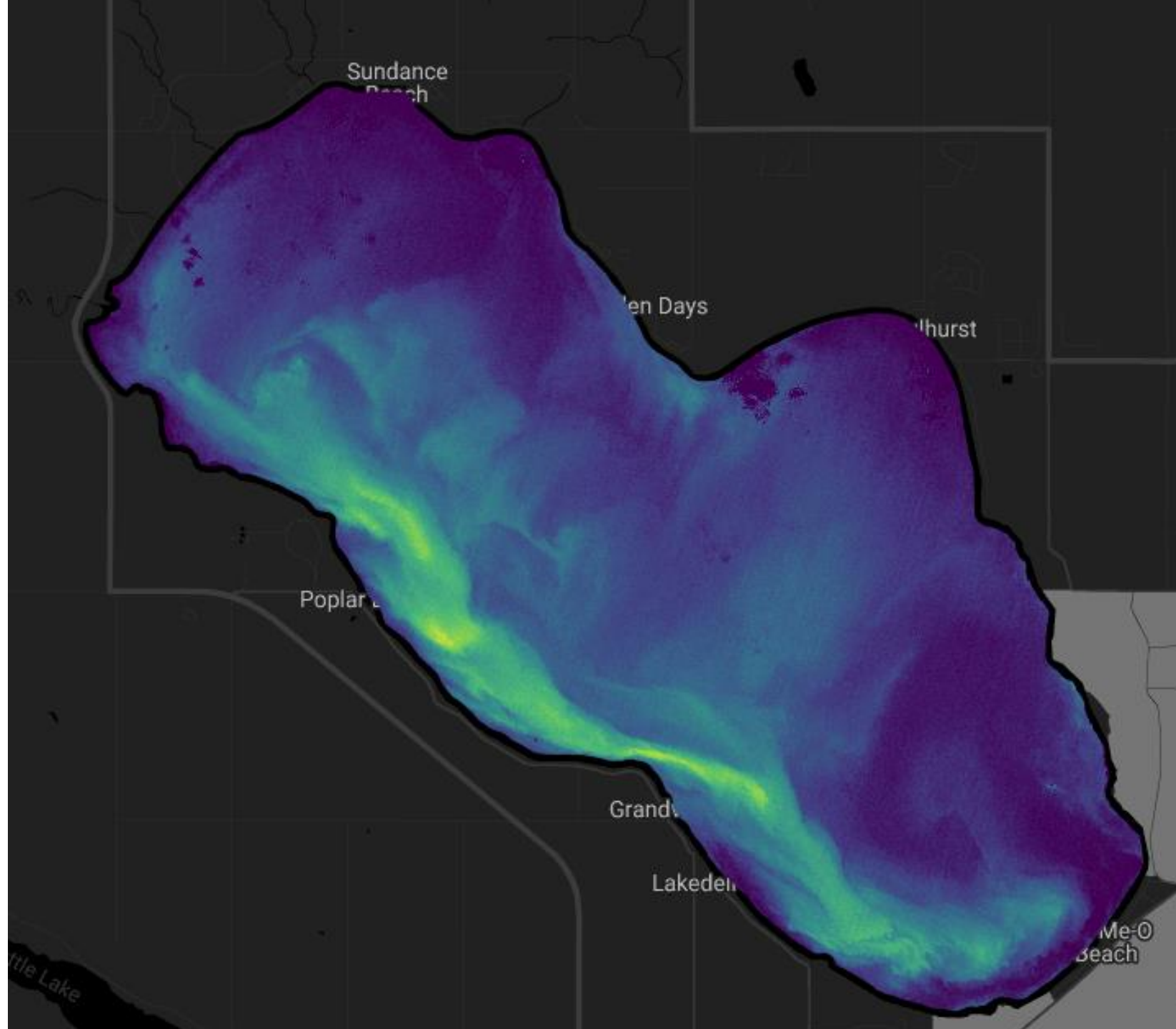
Alberta Beach
July 24th 2022

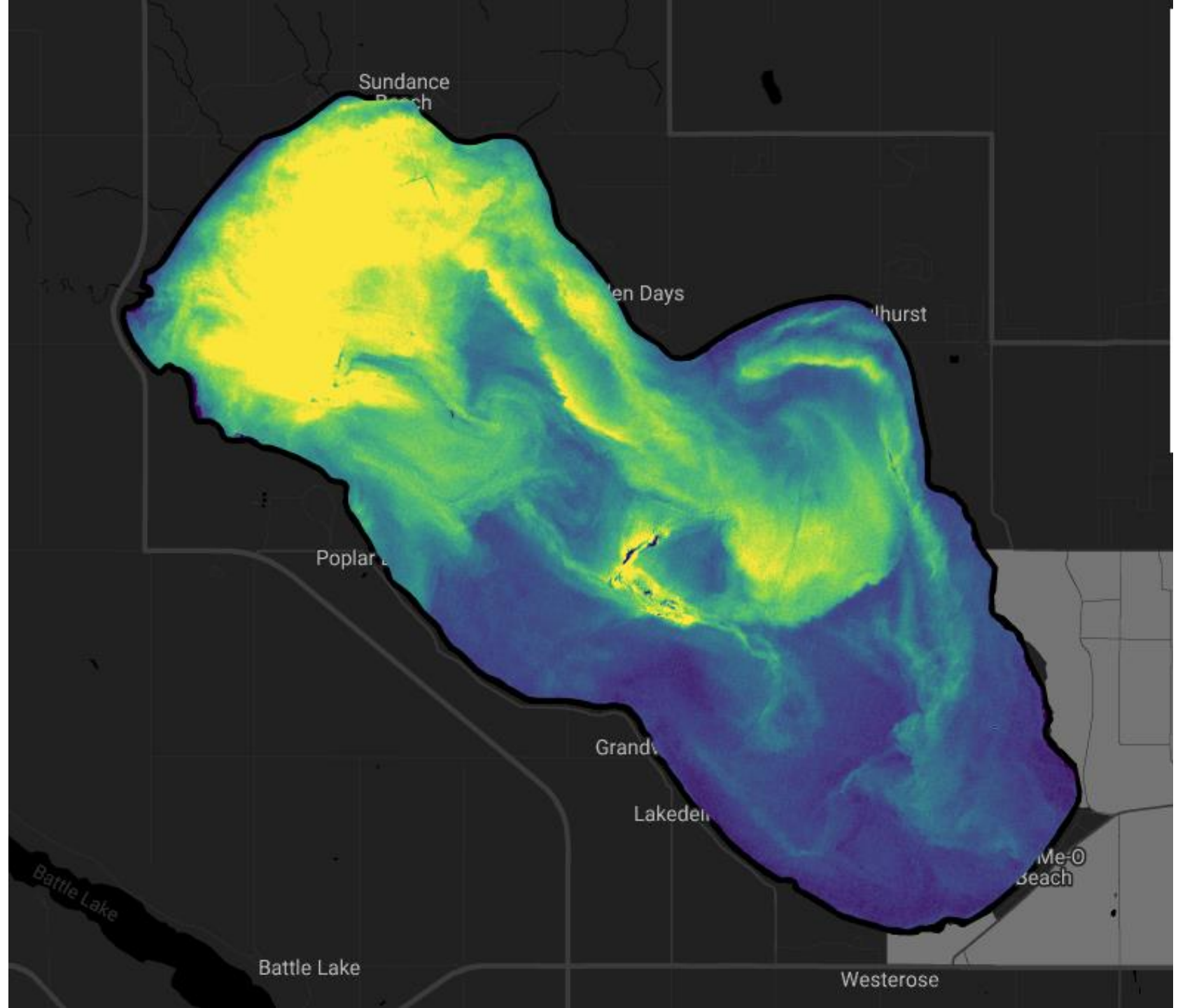


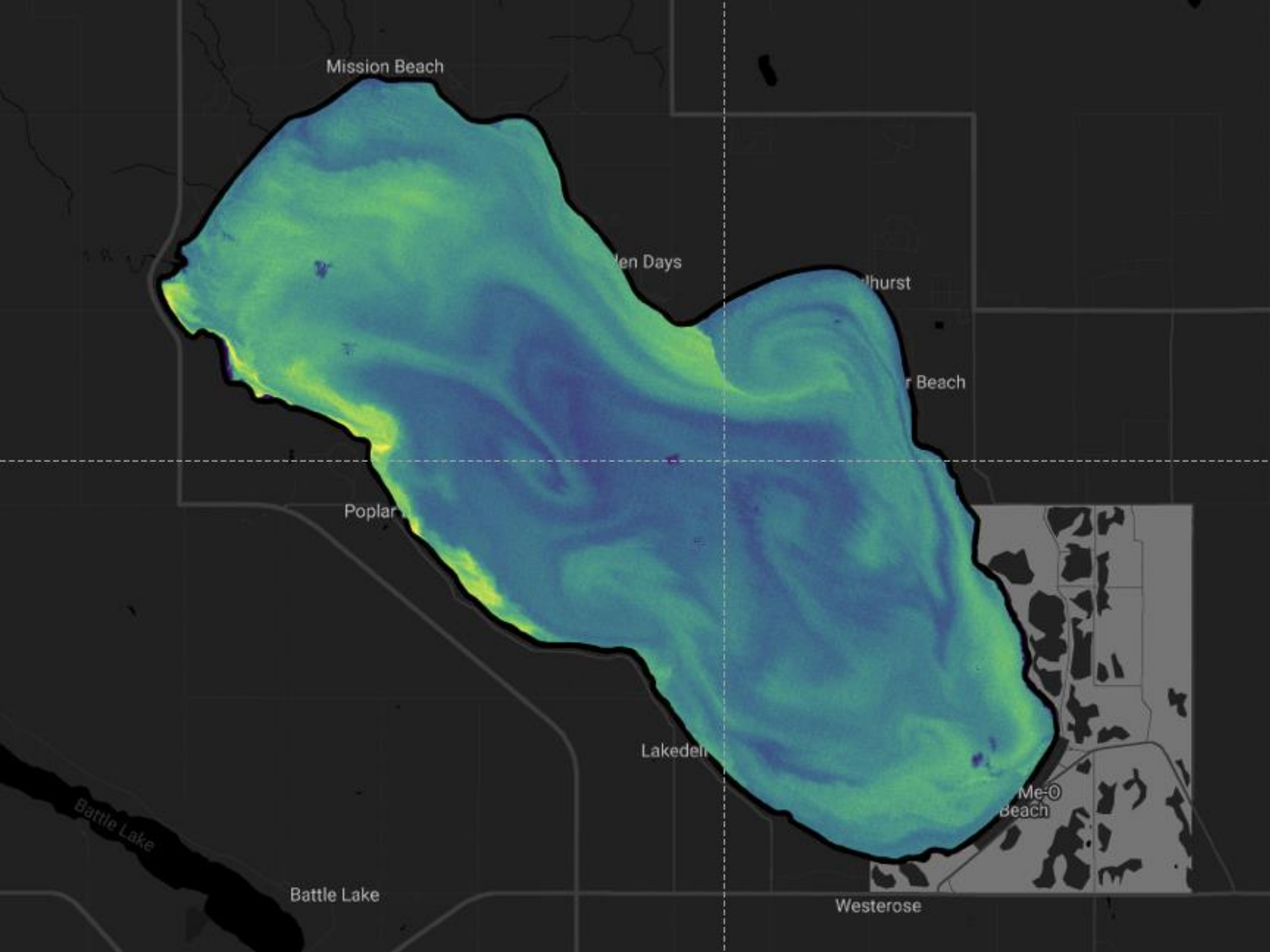
Alberta Beach
July 24th 2022

LakeWatch in Space











LakeKeepers



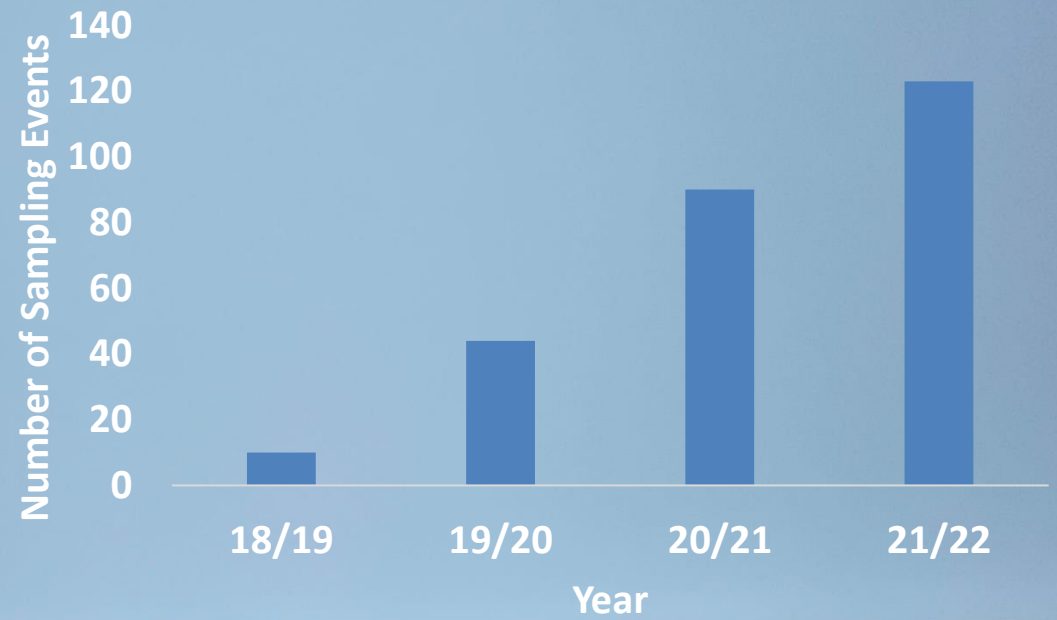


Nutrients

Biological
Parameters

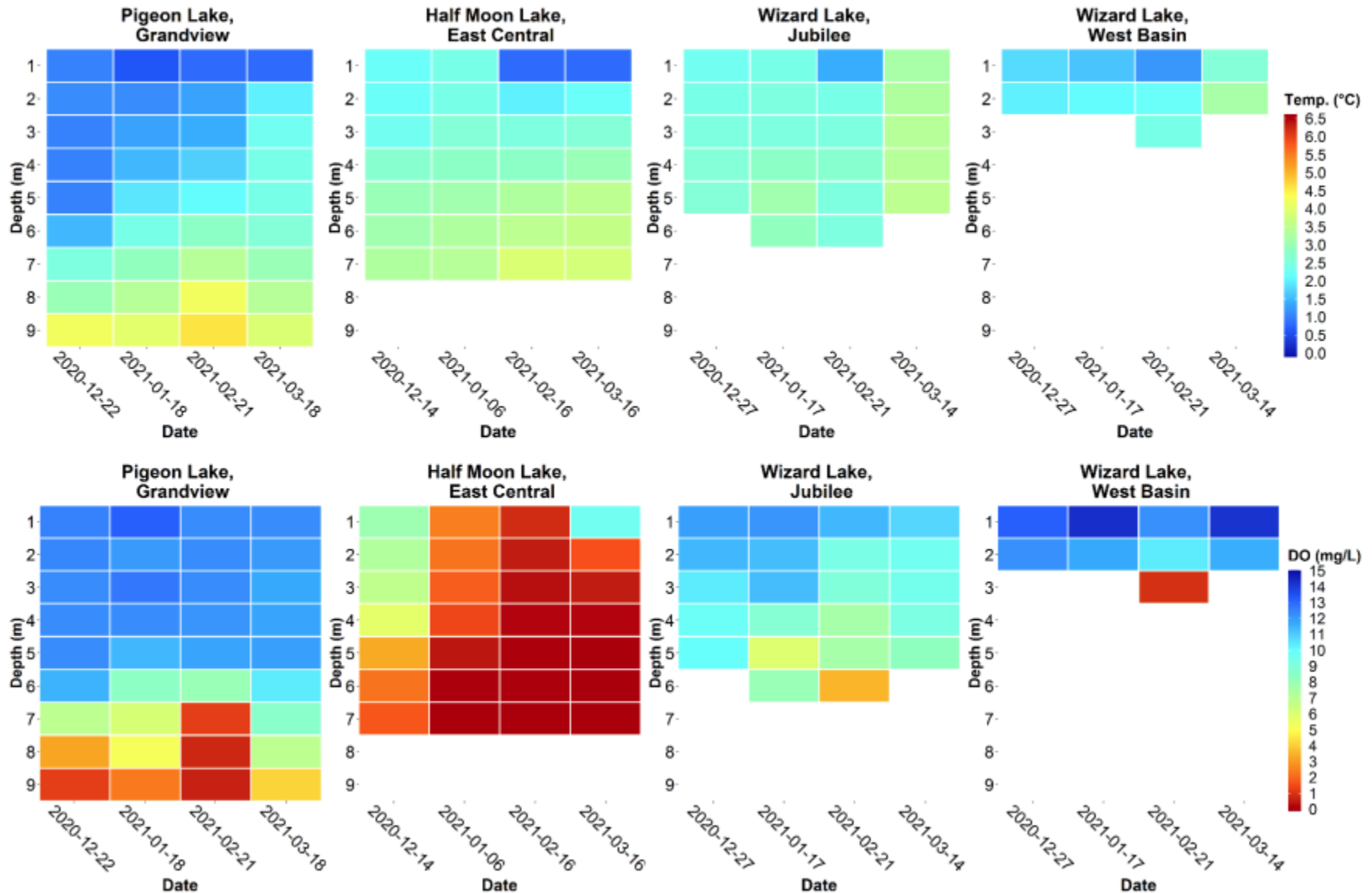
Chemistry

Physical
Parameters



LakeKeepers

Winter Reports Highlight Nutrients, Temperature, Oxygen, and More.



Alberta



Cabela's

OUTDOOR FUND



ALBERTA
ecotrust



Thank You!

Bradley Peter
Executive Director
Alberta Lake Management Society
info@alms.ca
7850-702-2567